



100



JOHN O'GROATS 1926 - 2026
MONTE CARLO RALLYE

ANNIVERSARY MONTE 100 CLASSIQUE

29 January - 4 February 2026



Organised by Monte Start Committee Scotland
in association with ERDC

SUPPLEMENTARY REGULATIONS

Dear Friends,

To mark the 100th anniversary of the first Start of the Monte Carlo Rallye from John O'Groats in the far north of Scotland, we are pleased to announce this very special classic car event, The Anniversary Monte 100 Classique. From John O'Groats we shall drive to the Principality of Monaco following in the tracks of the pre-war Montes, taking in many of the famous cols and passes in the French Alps. Like the Montes of old, the goal is simply to reach Monte Carlo in time for the party. No overnight driving is involved in this event and it is open to pre-war cars from 1924-1939 and post-war cars from 1948-1986.

The Classique will depart from the world famous sign post at John O'Groats on the morning of Thursday 29 January 2026 and follow the Rallye Monte Carlo Historique competitors to Reims, visiting their Passage Controls en route. There will be an overnight halt on 29 January at the Doubletree Hotel, North Queensferry. On Friday 30 January we will make our way through the Borders and the North of England to a Passage Control in York and then on to Hull for the overnight ferry to Rotterdam. On Saturday 31 January, after disembarking from the ferry, we will take the road to Reims where we will have an overnight halt. On 1 February we will have the opportunity to visit the Reims scrutineering venue, view the Reims Starters and take in the atmosphere before setting off, in advance of the Historiques. After driving across France we navigate the high Alps then down to the coast and finally to Monaco and the warmth of the Mediterranean winter sun. On Wednesday 4 February you will have the opportunity to drive the traditional Mountain Circuit behind Monaco, finishing at the Col de Turini in time for lunch. In the evening there will be a glittering black tie dinner and prizegiving in the restaurant of the Automobile Club de Monaco. A glamorous finale to a truly memorable event.

When you 'sign on' at John O'Groats you will receive a roadbook; rally plates; anniversary stickers; gifts and mementos. The entry fee includes the pre-rallye dinner at John O'Groats; overnight accommodation with breakfast in a twin/double room at the Doubletree Hotel, North Queensferry; overnight ferry crossing from Hull to Rotterdam including cabin; two nights in a twin/double room at the five star Fairmont Hotel, Monaco and an invitation to the black tie dinner and prizegiving at the Automobile Club de Monaco.

We would like to thank the Automobile Club de Monaco for their help and support in making this event possible. The team look forward to welcoming you to John O Groats where your Monte adventure begins.

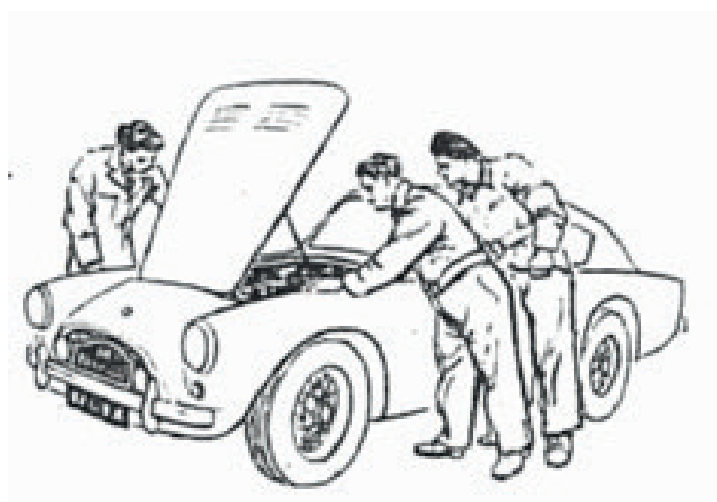
Douglas Anderson Co-ordinator John O'Groats Start and UK Leg
Rallye Monte Historique and Anniversary Monte 100 Classique.

I PROGRAMME**FRIDAY 5 SEPTEMBER 2025** Entry Opens**FRIDAY 5 DECEMBER 2025** Entry Closes**CONFIRMATION OF ENTRY ON RECEIPT OF PAYMENT****MONDAY 5 JANUARY 2026** Final Instructions Issued**WEDNESDAY 28 JANUARY 2026** Document Checks and Scrutineering

Document checks and Scrutineering will take place at Keiss. Details of Scrutineering and Signing On will be sent out with the Final Instructions. You will be required to present the following documents: The vehicle's registration document (V5C); Driving licences of driver and co-driver(s); proof of insurance including cover for driving in Europe; Mandatory items for a vehicle and crew in France are a warning triangle, headlamp beam deflectors, reflective jackets for all crew to be kept in the car, breathalysers, first aid kit, UK sticker, light bulb kit. It is suggested that you visit the AA or RAC websites for the most up to date advice on ULEZ compliance in the UK, Netherlands, Belgium and France. Drive-France.com describes fully the requirements and especially the requirement for a Crit Air Sticker and how to obtain one.

You will also require a passport which is valid for at least 3 months after your departure date. If your insurance does not include overseas vehicle recovery, it is advisable to take out this type of cover. This event can be described as a motoring holiday. It is not a competitive rally.

On the same day there will be the option to take part in a manoeuvrability test, concours d'elegance and comfort competition. These were part of the early Monte Carlo Rallies. There will be a pre-rally dinner in the evening.



II ITINERARY

THURSDAY 29 JANUARY 2026 John O'Groats

From 8.40 Start Time Control

From 11.30 Passage Control Inverness

From 14.30 Route Check Glencoe Ski Centre

From 16.30 Holding Area Doune Hillclimb

From 17.30 Passage Control Stirling Castle

Overnight Halt at Doubletree by Hilton Queensferry Crossing



FRIDAY 30 JANUARY 2026

- From 8.30 Depart from Doubletree by Hilton Hotel
- From 12.30 Route Check George Hotel, Pierce Bridge
- From 14.30 Passage Control York
- From 16.30 Hull International Ferry Terminal Check-in opens
- 20.00 Ferry leaves for Rotterdam



SATURDAY 31 JANUARY 2026

From 10.00 Disembark at Ferry Terminal, Rotterdam

From 11.45 Antwerp Bypass and Bruxelles Ring Road (RO)

From 12.45 Sponton

From 13.15 Route Check Hotel Pont-a-Lesse

From 17.00 Parc Des Expositions, Reims

Overnight Halt Reims Hotel arrangements to be sent out separately

Outline Route. Auto Route from Ferry Port to the south of Rotterdam and then via Antwerp and Brussels. E411 to Junction 19 beyond Namur then via minor roads to Dinant for Route Check and Rest Halt. Continue alongside Meuse River to A304 and then on to Reims Parc des Exposition.



SUNDAY 1 FEBRUARY 2026

- From 9.00 Depart from Parc Des Expositions, Reims
- From 10.00 Collegielle Notre Dame, in Vitry Le Francois
- From 11.00 Bar-sur-Aube
- From 11.45 Chaumont Railway Viaduct
- From 12.15 Langres
- From 13.00 Gray
- From 13.45 Dole
- From 14.30 Lons de Saunier
- From 17.30 Belley
- From 18.00 Aix - les - Bains Hotel arrangements to be sent out separately

Outline Route. Restart from Parc des Expositions via canal side road to D9 head to Langres via Challons, Vitry, Bar sur Aube and Chaumont. Continue south to Aix Les Bains via Gray, Dole and Lons le Saunier. Overnight stay in Aix les Bains.



MONDAY 2 FEBRUARY 2026

From 9.00 Depart from Hotel Aix Les Bains

From 10.45 Saint Jean en Royans

From 13.00 Die

From 14.00 Remuzat

From 16.00 Gap Hotel arrangements to be sent out separately

Outline Route. Restart from Aix Les Bains Hotel and through Chambéry to drive towards the Vercours. Drive the Vercours Stages of the Historique Monte Stages across the Vercours to Die. Drive a well-used section to Remuzat and then onwards to Serres before heading to Gap.



TUESDAY 3 FEBRUARY 2026

From 9.00 Depart from Hotel Gap

From 11.00 Selonnet

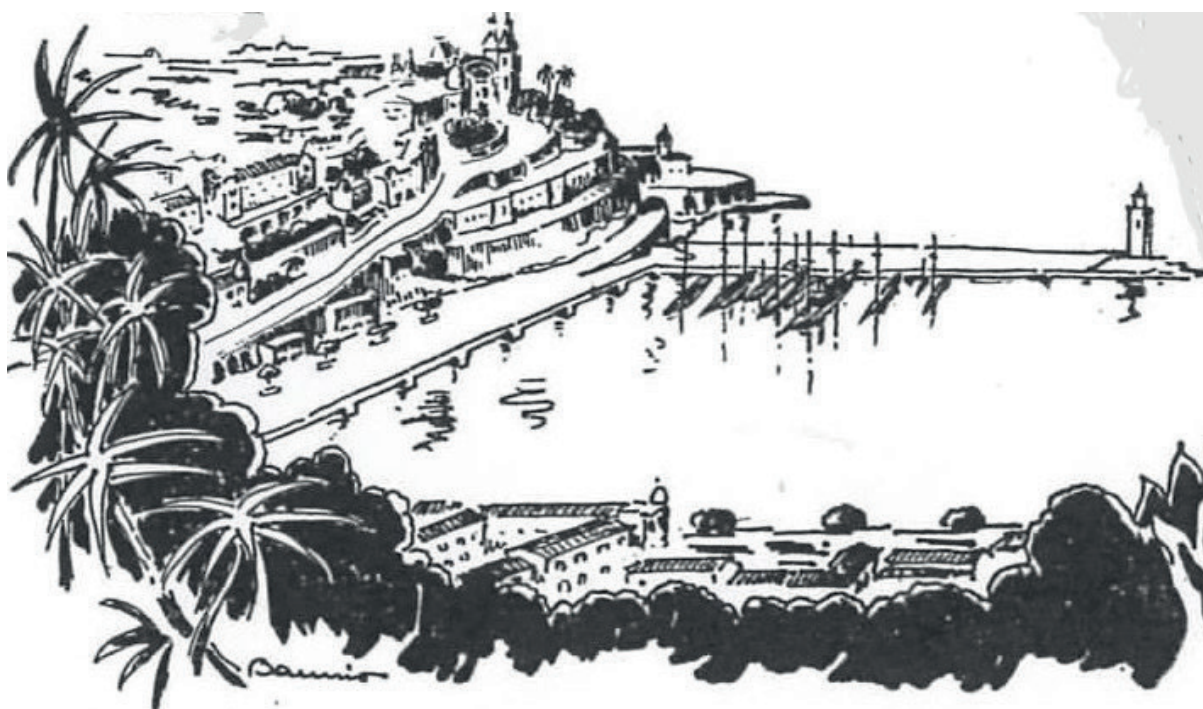
From 12.30 St Auban

From 14.45 La Turbie

From 15.15 Finish Quai Albert 1er Monaco

Book into your room at the Fairmont Hotel, Monte Carlo for two nights twin/double room with breakfast included.

Outline Route. Restart from Hotel, Gap. Drive to Digne Les Bains and tackle the Historique stage to Chaudon Norante followed by the quiet hills through St Auban. Drive the well-used rally route to Gillette and then head to Motorway at Nice. A final toll section from Nice to La Turbie and then the scenic entry to Monaco and the Finish on Quai Albert 1er.



WEDNESDAY 4 FEBRUARY 2026

Col de Turini Mountain circuit (optional)

From 10.00 Depart Monaco

From 10.15 Jct 58 A8

From 10.17 Jct 59 A8

From 11.00 Sospel

From 12.15 Arrive Col de Turini

Lunch Halt

From 13.30 Depart Col de Turini

From 14.15 Luceram (D2566)

From 14.45 Peillie (D21 & D53)

From 15.00 La Turbie (D53)

Return to Monaco

Automobile Club de Monaco hosted Black tie Dinner and Prizegiving



II ORGANISATION

The Anniversary Monte 100 Classique is a touring event organised by the Monte Start Committee Scotland in association with Ecosse Rallye Drivers Club. There is no timing on the road and it is strictly non-competitive. The only fixed time is your start time in John O'Groats, other times are for guidance. UK section run under a certificate of exemption issued by Motorsport UK.

IV ELIGIBLE CARS

Cars must be road legal and similar to the type of model which took part in the Monte Carlo Rallies between 1948 and 1986. Pre-war cars of any type from 1924 to 1939 are eligible to enter this event. No historic technical passport is required for either category.

V ELIGIBLE CREWS

Crews must consist of one driver and one or more co-drivers, all holding a valid driving licence and covered by insurance for the entire event in the UK and in France.

VI DRIVING STANDARDS

Please drive at all times with due consideration, in particular in the towns and villages. Please abide by all speed limits and warning signs, particularly on 'unprotected' crossroads shown as an 'X' on the warning sign. You do not have the right of way and it is 'priorité à droit', ie vehicles entering the junction on your right have priority even if it appears to be a side road.

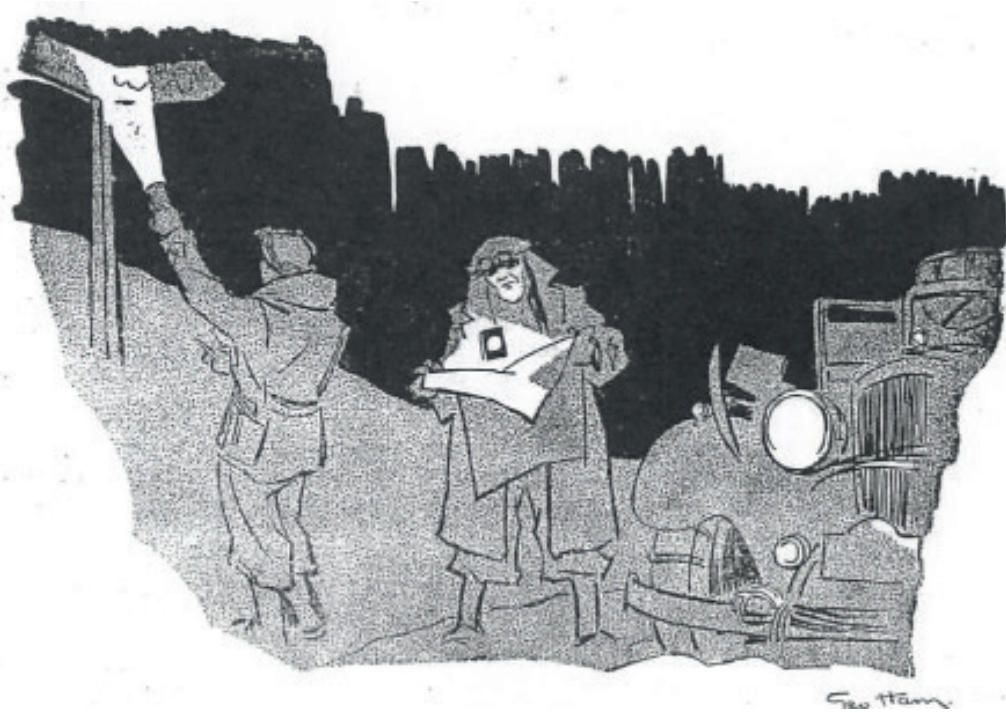
Most French towns and villages have speed humps to manage traffic. They are not always indicated by a sign so please be alert in order to avoid damage to your car. Most speed cameras are identified by a sign alongside, but random mobile checks are carried out also and any fine issued has to be paid on the spot.



VII ROUTE AND NAVIGATION

The route will be sent out in advance in Monte Carlo Rallye style so that you can plot it onto your road map. Suggested maps: For the route from John O'Groats to Hull Phillips Navigator Road Atlas (Spiral bound); From Rotterdam to Reims Philips Big Road Atlas Europe; Reims to Monaco Michelin 1:200000 France Road Atlas (Spiral bound); For Turini Tour and area around Monaco IGN1/25000 "TOP25" maps ET3741 and ET3743. It is a suggested route and you are free to choose a different route should you be held up by unforeseen circumstances.

You will receive a route book which will include the Passage Controls and route checks in the UK. You will also receive a Route Card for the European Section of the event which will identify landmarks to look out for and route checks en route, should you decide to follow the suggested route.



IMPORTANT

THE ROUTE THROUGH FRANCE IS A SUGGESTED ROUTE

ALL TIMES ARE INDICATIONS ONLY



VIII OPTIONAL COMPETITIONS

Information about these optional competitions will be sent out to those who opt to enter.

ANNIVERSARY MONTE 100 CUP

ANNIVERSARY MONTE 100 DRIVING TEST CUP

ANNIVERSARY MONTE 100 CONCOURS D'ELEGANCE CUP

ANNIVERSARY MONTE 100 COMFORT CUP

ANNIVERSARY MONTE 100 TEAM PRIZE

Everyone who makes it to the ACM dinner will receive a Finisher's Medal.

IX ENTRY FEE

The entry fee will be £795 per crew member and must be paid with the entry form. Should you have to withdraw we will only be able to reimburse the entry fee if we can cancel the hotel rooms and gala dinner tickets. You may wish to check if this expense would be covered by your personal travel insurance.

Many of the images in this document are from the 1948 Monte Carlo Rallye Regulations

